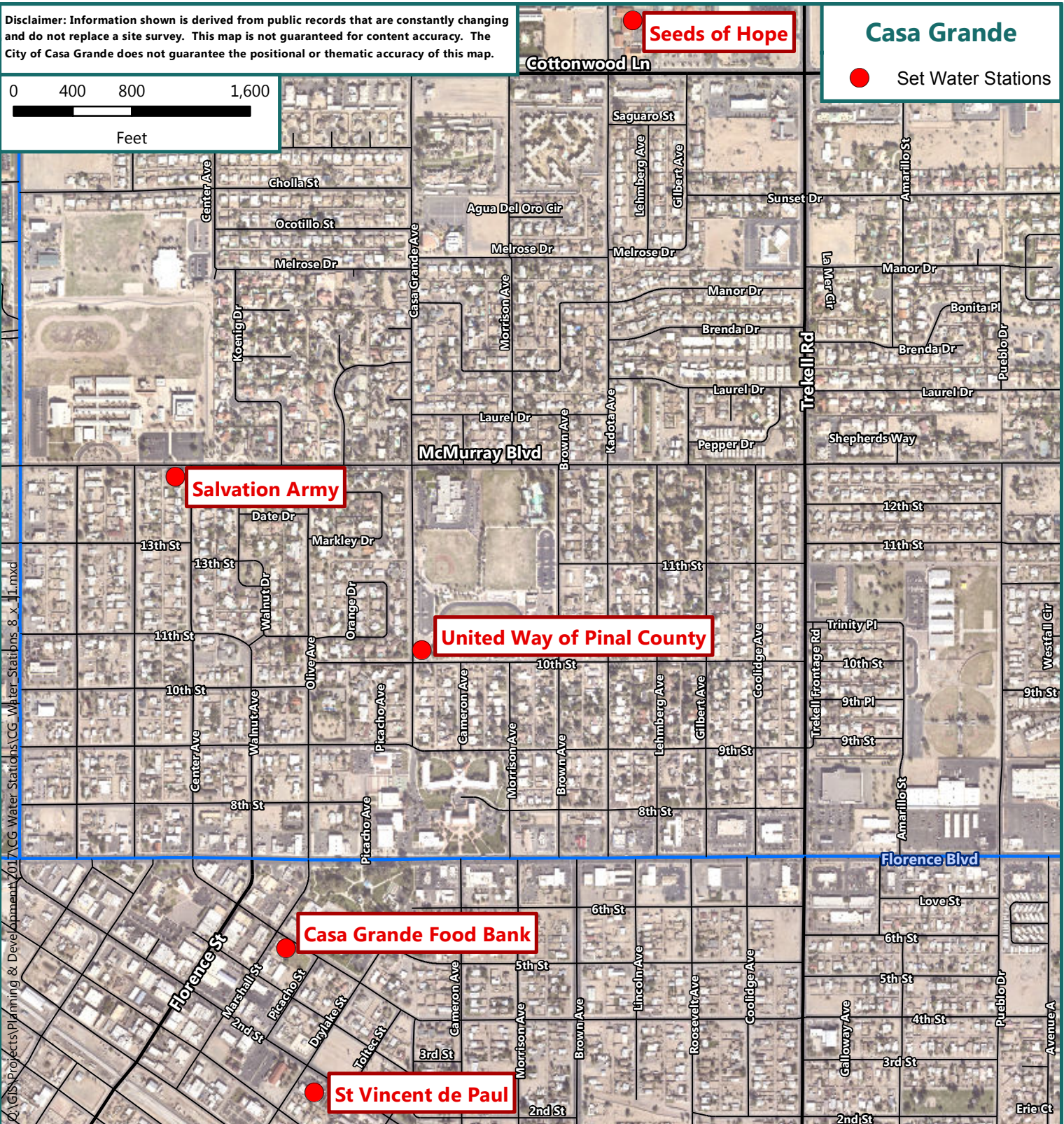
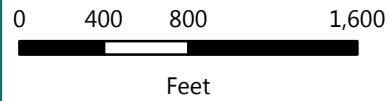


Disclaimer: Information shown is derived from public records that are constantly changing and do not replace a site survey. This map is not guaranteed for content accuracy. The City of Casa Grande does not guarantee the positional or thematic accuracy of this map.

Casa Grande

● Set Water Stations



| Name | Address | Mon. | Tues. | Wed. | Thurs. | Fri. | Sat. | Sun. |
|----------------------------|---------------------|-----------|-----------|-----------|-----------|-----------|---------|-------|
| Casa Grande Food Bank | 235 E 4th St | 2pm-4pm | - | 2pm-4pm | - | 2pm-4pm | - | - |
| Casa Grande Police | Mobile/Squad Cars | 24hrs | 24hrs | 24hrs | 24hrs | 24hrs | 24hrs | 24hrs |
| Salvation Army | 1333 N Center Ave | 9am-5pm | 9am-5pm | 9am-5pm | 9am-5pm | 9am-5pm | - | - |
| Seeds of Hope | 702 E Cottonwood Ln | 11am-12pm | 11am-12pm | 11am-12pm | 11am-12pm | 11am-12pm | - | - |
| St. Vincent de Paul | 405 E 2nd St | 9am-3pm | 9am-3pm | 9am-3pm | 9am-3pm | 9am-3pm | 9am-3pm | - |
| United Way of Pinal County | 402 E 10th St | 7am-5pm | 7am-5 pm | 7am-5pm | 7am-5pm | - | - | - |